



CLED Surface Mount Canopy

Replace HID Canopy Lighting with the CLED Surface Mount Canopy Luminaire

CLED Feature	CLED Advantage	Compare to Typical MH HID
Replace 250W to 400W HID	Significant energy savings	65 to 75% energy savings for each canopy fixture
Efficient long life: 65,000 hours rated, over 100,000 hours projected	Significant reduction of maintenance costs	10,000 to 20,000 hour lamp life means more lamp replacement and higher maintenance cost
Loss of light over time	65,000 hours with 70% lumen maintenance for well-lit gas canopies for years to come	40 to 60% lumen loss occurs quickly; at less than half the life of the lamp, the light output is greatly reduced
Optical design	Internal reflectors providing optimal light distribution on dispensers and under canopy drive lanes	Lens providing high glare, wasted up-light on canopy and low performance on dispensers and under canopy drive lane
Pleasing aesthetics	Low profile 2" below the canopy deck	Drop lens 6-7" below canopy deck; lens fills with insects and discolors over time
Upgrade & maintenance friendly	Full access to fixture driver box and LED board below canopy deck	Ballast box access above canopy for increased labor costs



Compare CLED to Metal Halide HID

CLED-HL-7-UNV-S-5-WH

Watts

Initial Lumens

Hours of Life

120

produces about
14,754
maintaining
70% of light
over rated life

rated
65,000
projected over
100,000 hours

400W MH

Watts

Initial Lumens

Hours of Life

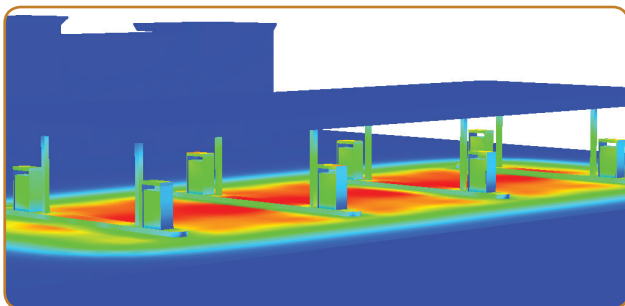
455

produces about
23,400
with 40%
lumen drop by
8,000 hours

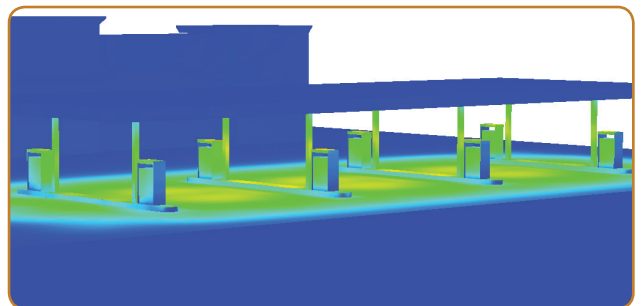
20,000
frequent
change-out is
required

A typical CLED retrofit can increase the average footcandles up to 35%.

CLED Canopy



HID Canopy



Retrofitting your HID canopy system using the CLED Canopy Luminaire offers tremendous value in performance and energy savings.